



PROSPECT HALL

FOR SALE

Newly renovated, historic mansion

Located at the Intersection of Butterfly Lane and Jefferson Pike in Frederick, Maryland

Brokerage • Consulting • Investment • Development



Property Highlights

Location:	889 Butterfly Lane Frederick, MD 21703
Available:	Newly renovated exterior of historic mansion with 17,000 sf of interior space. Additional land available for future expansion.
Zoning:	R-12 Residential
Potential Uses:	Restaurant, winery, antique or gift shop, museum, cultural center, office space, school, assisted living, daycare, bed and breakfast, and more
Sale:	\$750,000

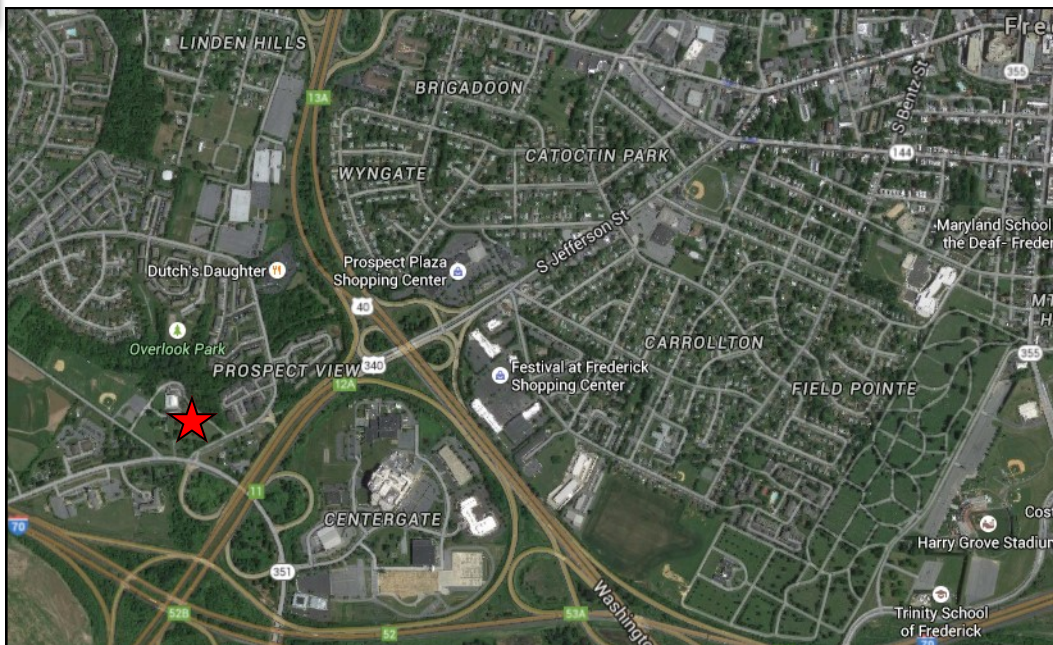
For Leasing Information, Please Contact:

Joe Lomangino

410-266-5100 x128

JLomangino@hogancompanies.com

Hogan Companies, LLC
2661 Riva Road, Suite 300 Annapolis, Maryland 21401
410-266-5100 • www.hogancompanies.com



Property Highlights

- Original construction of the mansion was completed around 1810
- Visitors of the mansion included George Washington and Harry Truman
- The mansion is situated on the highest point of elevation in the City of Frederick
- Former home to St. John's Literary Institution also known as St. John's Catholic Prep

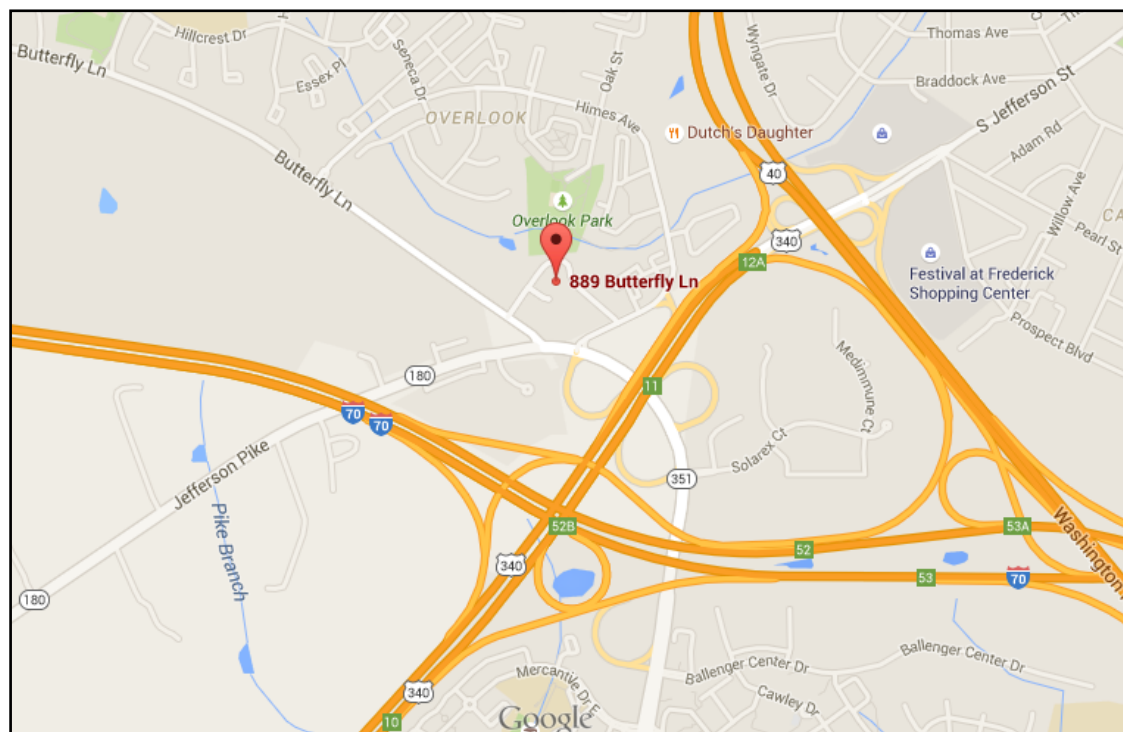
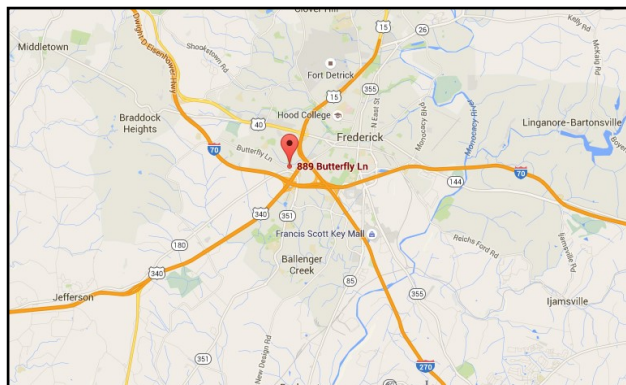
2014 AADT

Jefferson Pike: 44,815

Location:	Located at the intersection of Butterfly Lane and Jefferson Pike (Route 180) in Frederick, with close proximity to the Golden Mile, Historic Downtown Frederick, Jefferson Tech Park, and much more. Easy access to interstates I-70 and I-270, and US 15.
Status:	Exterior Renovation Complete
Zoning:	R-12 Residential
Parking:	On-site, no shared parking
Utilities:	Public water and sewer

PROSPECT HALL

Location Maps



Brokerage • Consulting • Investment • Development